

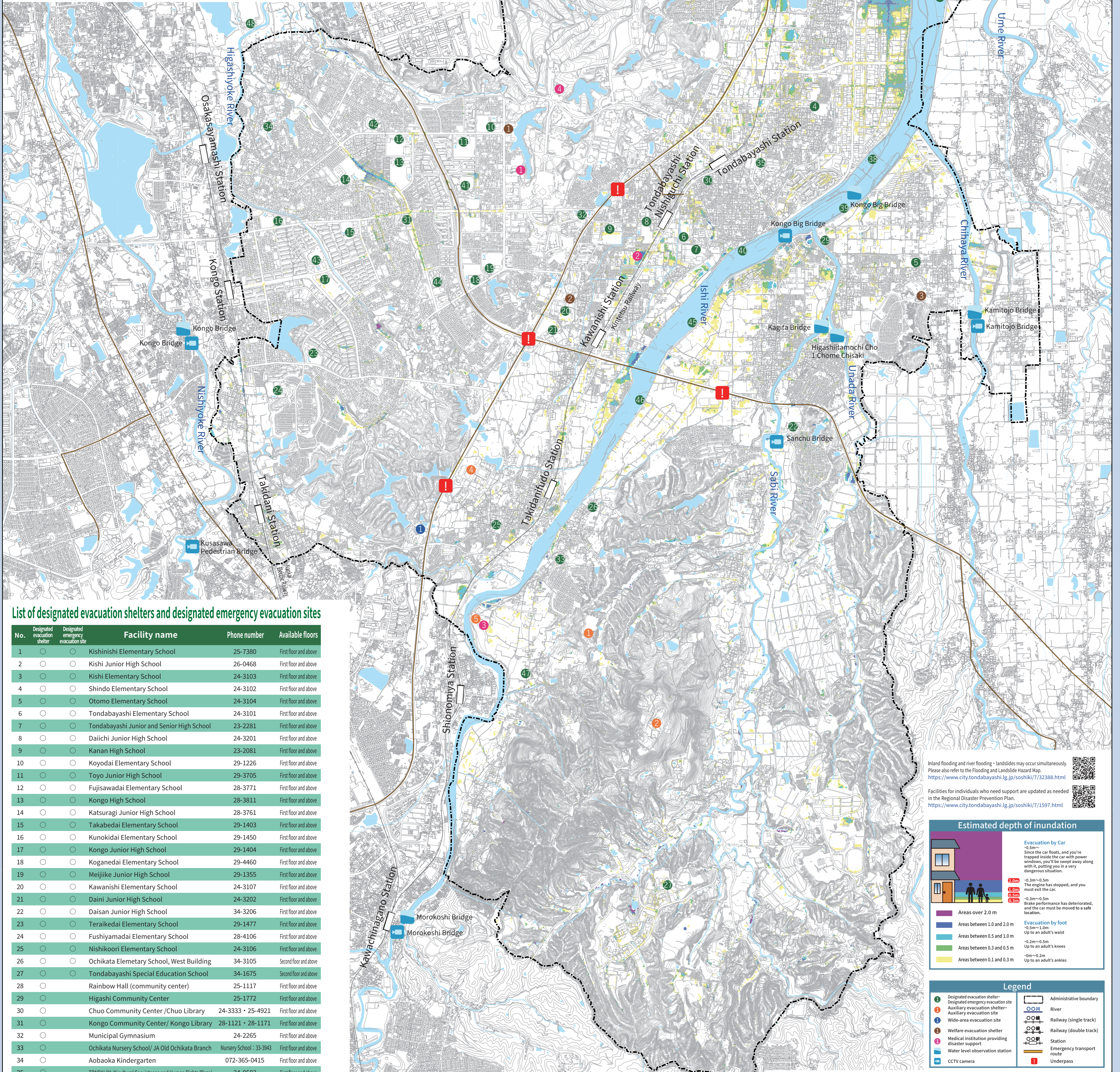
Tondabayashi

Inland Flooding Hazard Map

For home use

This map provides information on areas where flooding damage is anticipated, evacuation sites, and other relevant details. It is intended to be used for self-help, mutual aid, and public assistance, and to enhance disaster awareness and preparedness for flooding. The estimated depth of inundation is calculated assuming rainfall at the maximum scale for the sewer system (147 mm/hour) and indicate locations topographically prone to flooding. Be aware that flooding may occur in areas not shown on the map.

Inland flooding occurs when rainfall cannot be sufficiently drained by channels or drainage systems. Human casualties from Inland flooding include falling into waterways or drainage channels and being swept away, or being swept into uncovered gutters or sewer pipes while evacuating on flooded roads. If evacuation routes are flooded, staying put in higher locations such as the second floor of a house is also an effective evacuation method.



List of designated evacuation shelters and designated emergency evacuation sites

No.	Designated evacuation shelter	Designated emergency evacuation site	Facility name	Phone number	Available floors
1	○	○	Kishinishi Elementary School	25-7380	First floor and above
2	○	○	Kishi Junior High School	26-0468	First floor and above
3	○	○	Kishi Elementary School	24-3103	First floor and above
4	○	○	Shindo Elementary School	24-3102	First floor and above
5	○	○	Otomo Elementary School	24-3104	First floor and above
6	○	○	Tondabayashi Elementary School	24-3101	First floor and above
7	○	○	Tondabayashi Junior and Senior High School	23-2281	First floor and above
8	○	○	Daiichi Junior High School	24-3201	First floor and above
9	○	○	Kanan High School	23-2081	First floor and above
10	○	○	Koyodai Elementary School	29-1226	First floor and above
11	○	○	Toyo Junior High School	29-3705	First floor and above
12	○	○	Fujisawadai Elementary School	28-3771	First floor and above
13	○	○	Kongo High School	28-3811	First floor and above
14	○	○	Katsuragi Junior High School	28-3761	First floor and above
15	○	○	Takabedai Elementary School	29-1403	First floor and above
16	○	○	Kunokidai Elementary School	29-1450	First floor and above
17	○	○	Kongo Junior High School	29-1404	First floor and above
18	○	○	Koganedai Elementary School	29-4460	First floor and above
19	○	○	Meijiike Junior High School	29-1355	First floor and above
20	○	○	Kawanishi Elementary School	24-3107	First floor and above
21	○	○	Daini Junior High School	24-3202	First floor and above
22	○	○	Daisan Junior High School	34-3206	First floor and above
23	○	○	Teraikedai Elementary School	29-1477	First floor and above
24	○	○	Fushiyamadai Elementary School	28-4106	First floor and above
25	○	○	Nishikoori Elementary School	24-3106	First floor and above
26	○	○	Ochikata Elementary School, West Building	34-3105	Second floor and above
27	○	○	Tondabayashi Special Education School	34-1675	Second floor and above
28	○	○	Rainbow Hall (community center)	25-1117	First floor and above
29	○	○	Higashi Community Center	25-1772	First floor and above
30	○	○	Chuo Community Center / Chuo Library	24-3333 • 25-4921	First floor and above
31	○	○	Kongo Community Center / Kongo Library	28-1121 • 28-1171	First floor and above
32	○	○	Municipal Gymnasium	24-2265	First floor and above
33	○	○	Ochikata Nursery School / JA Old Ochikata Branch	Nursery School : 33-3943	First floor and above
34	○	○	Aobaoka Kindergarten	072-365-0415	First floor and above
35	○	○	TONPAL (Multicultural Coexistence and Human Rights Plaza)	24-0583	First floor and above
36	○	○	Kasenjiki (old) Kishi Pool Yoko Ground	—	—
37	○	○	Kasenjiki Kishi Ground	—	—
38	○	○	Kasenjiki Wakamatsu Higashi Ground	—	—
39	○	○	Ishikawa Kasen Park	—	—
40	○	○	Kasenjiki Ishikawa Ground	—	—
41	○	○	Kongohigashi Central Park	—	—
42	○	○	Fujisawadai Park	—	—
43	○	○	Kongo Central Park	—	—
44	○	○	Tsuzuyamadai Park	—	—
45	○	○	Kasenjiki Kawanishi Ground	—	—
46	○	○	Kasenjiki Nishitamochi Ground	—	—
47	○	○	Fushimido Chibikko Rojin Iko no Hiroba	—	—
48	○	○	Sayama Mizu Mirai Center	072-365-2490	First floor and above

List of wide-area evacuation sites

No.	Facility name	Phone number	Available floors
1	Nishikoori Park	24-1506	—

List of auxiliary evacuation shelters and auxiliary evacuation sites

No.	Designated evacuation shelter	Designated emergency evacuation site	Facility name	Phone number	Available floors
1	○	○	Risho Gakuen Junior and Senior High School	34-1010	First floor and above
2	○	○	Kamenoi Hotel Tondabayashi	33-0700	First floor and above
3	○	○	PL Gakuen Ground	—	—
4	○	○	Osaka Ohtani University	24-0381	First floor and above
5	○	○	Yui Nozomi Hospital	34-1101	First floor and above

List of medical institutions providing disaster support

No.	Facility name	Phone number	Available floors
1	Osaka Saiseikai Tondabayashi Hospital	29-1121	First floor and above
2	Kongo Hospital	25-3113	Second floor and above
3	Yui Nozomi Hospital	34-1101	First floor and above
4	PL Hospital	24-3100	First floor and above

List of designated welfare evacuation shelters

No.	Facility name	Phone number	Available floors
1	Tondabayashi Care Center (Carepal)	28-8600	First floor and above
2	General Welfare Hall	25-8261	First floor and above
3	Kagari no Sato	20-6070	First floor and above

Inland flooding and river flooding • Landslides may occur simultaneously. Please also refer to the Flooding and Landslide Hazard Map. <https://www.city.tondabayashi.lg.jp/ssshiki/7/32388.html>

Facilities for individuals who need support are updated as needed in the Regional Disaster Prevention Plan. <https://www.city.tondabayashi.lg.jp/ssshiki/7/1597.html>

