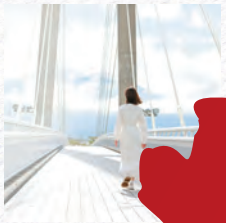




TONDABAYASHI Tourist Guide

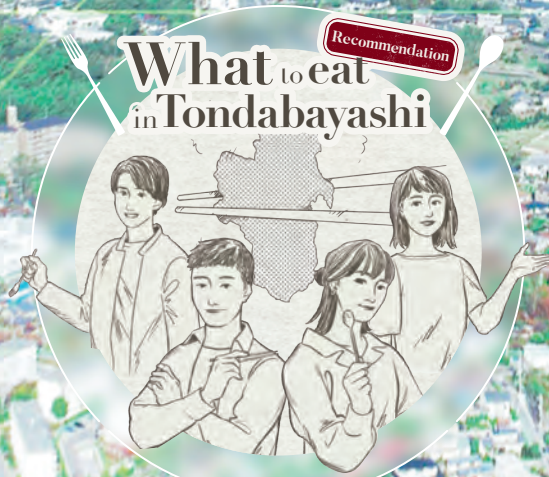


Welcome to
TONDA-verse

JAPAN | OSAKA

Welcome to

TONDA-verse



Tondabayashi ×
Universe of enthralling experiences = **“Tonda-verse”**

Jinai-machi, Savor Farm, planetarium and more...

Tondabayashi is full of things to see and do that are not in tourist guidebooks but worth a visit. It would be a pity to miss out – go discover!

Make a list of what you like doing on a trip, such as hands-on activities with a friend, walking around and eating local delicacies with your family, or taking pictures in a spectacular setting with your partner.

You can make such a trip a reality in Tonda-verse, a universe where infinite pleasure awaits.

Discover new attractions in Tondabayashi, and fill your day with happy memories.

Getting away from daily life

A spiritual spot where you can recharge your energy Migukurumitama Shrine

Included on the list of the 100 Best Greens in Osaka, this shrine is an excellent place to refresh yourself. The view of the sun rising between Odake and Medake peaks of Mt. Niijo can be seen only on a few days in spring (around April 6) and autumn (around September 6). Though not known widely, this spectacle is very popular among local people.

☎ 0721-23-3007

📍 3-2053 Miya-cho, Tondabayashi City, Osaka 584-0011



Historical townscape of Jinai-machi

The Jinai-machi area features temples and merchants' houses dating back to the Edo period, taking you on a time trip into the past. Enjoy the area in various ways, such as dropping in at a café to take a break from walking, and visiting unique stores.

For more information, see pages 5-8.



Beautiful sunset from the Ishikawa

The riverbed of the Ishikawa near Jinai-machi is the best spot to enjoy the sunset. The setting sun is reflected on the water, casting a breathtaking golden glow all around.



Walking

around Tondabayashi

It's worth visiting the following sites in Tondabayashi and discovering the local attractions, including the historical townscape like a period drama setting, the beautiful, relaxing natural environment, and various outdoor activities not possible in the city. Want to get away from daily life? Then take a trip to Tondabayashi!

Hands-on experiences, day and night

Seasonal hands-on farming experience in Savor Farm

Why not try harvesting vegetables and fruit in a farm surrounded by seasonal flowers? Savor Farm organizes monthly fun events, such as hands-on cooking using freshly-picked vegetables and fruit, enabling visitors to enjoy the blessings of the season year round.

For more information, see pages 13-14.

☎ 0721-35-3500

📍 2300 Kannabi, Tondabayashi City, Osaka 584-0054



Picking fruits



Harvesting vegetables



Planting



Cooking, making craftwork

Takidani Fudomyoo-ji Temple

This is one of Japan's three major temples dedicated to the Fudomyoo deity. Along with the statue of Fudomyoo, the statues of his attendants, Kongara Doji and Seitaka Doji, are designated as national important cultural properties.

Famous for its Buddhist service to pray for recovery from eye illness and for warding off evil and bringing good luck, this temple attracts many people all year round.

☎ 0721-34-0028

📍 1762 Ochikata, Tondabayashi City, Osaka 584-0058



Kamenoi Hotel's hot spring baths, to refresh your mind and body

Bathe in the hotel's renowned open-air natural hot spring baths while enjoying magnificent views of the Kongo mountain range. Get away from fatigue and stress, and relax both mind and body.

☎ 0721-33-0700

📍 880-1 Ryusen, Tondabayashi City, Osaka 584-0053



Introducing Jinai-machi



About Jinai-machi

With the townscape of the Edo period remaining partly intact, the Jinai-machi area is an extraordinary time-slip back into the past. Along with historical buildings, there are a number of new fashionable and attractive stores, allowing you to enjoy eating and shopping while walking through historical streets.

Recommend Spots

Spot
1



Listed as one of
the 100 best streets
in Japan

Jonomon-suji Avenue

This is the main street of the Jinai-machi area. With no telephone poles or wires in sight, it feels like you've stepped into a movie. The view of the street lit up at night is spell-binding.

One of the
oldest buildings in
the Jinai-machi area

Spot
2



Former Sugiyama Family Residence

This large traditional residence is a national important cultural property of Japan. It was used as a location for NHK's morning drama series "Come Come Everybody," and made a huge impression on viewers.

☎ 0721-23-6117

📍 14-31 Tondabayashi-cho,
Tondabayashi City, Osaka 584-0033

Spot
3



A landmark
of Jinai-machi

Koshō-ji Branch Temple

Built in the Edo period, this time-honored temple played an important role in the development of Jinai-machi. A samurai movie titled *Moeyo Ken (Bum, O Sword)* was filmed on the grounds of the temple.

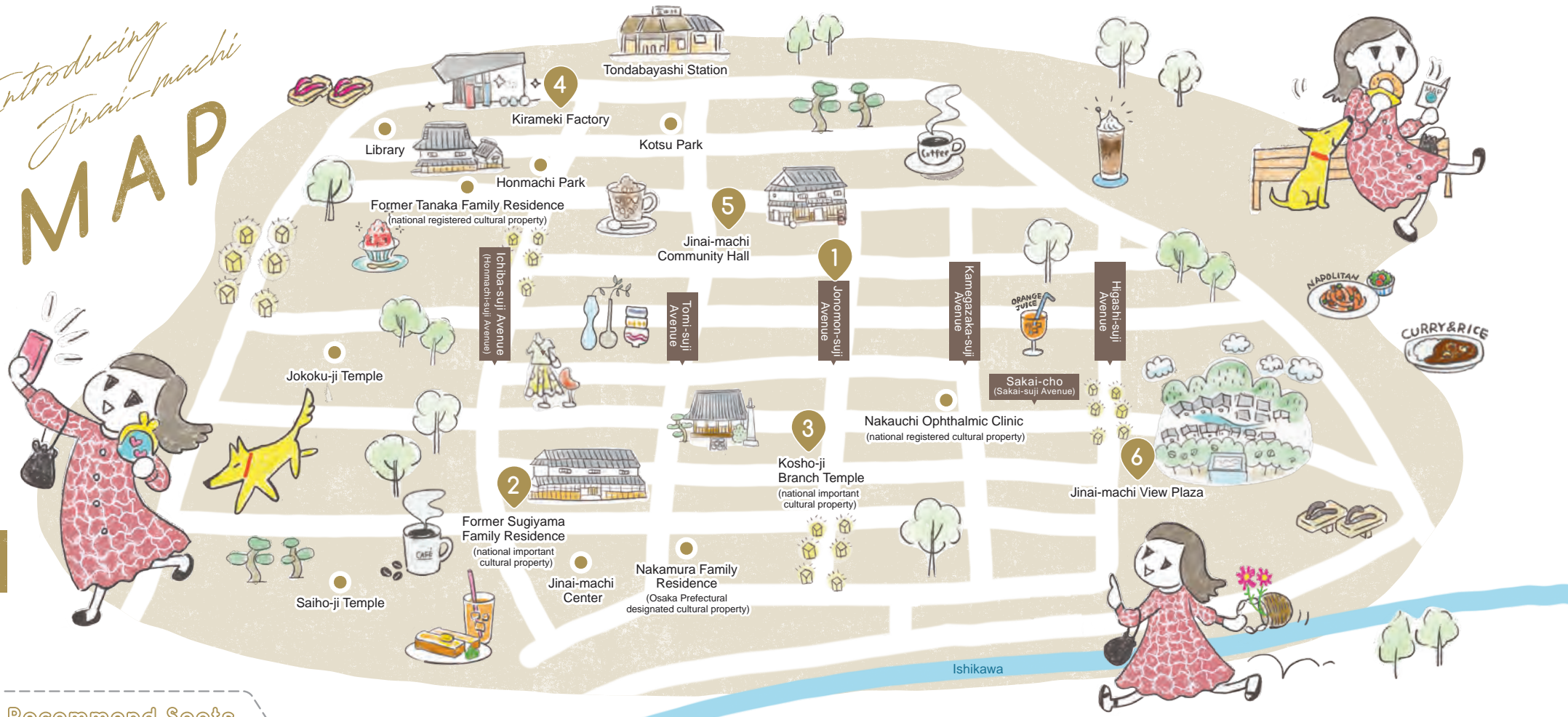
*The temple is currently undergoing renovation.

☎ 0721-23-3555

📍 13-18, Tondabayashi-cho,
Tondabayashi City, Osaka
584-0033

Introducing Jinai-machi MAP

TONDA-verse 2



Recommend Spots



Kirameki Factory
This is a tourist information center located in front of Tondabayashi Station, where you can get information on local attractions and buy souvenirs. The rest area on the second floor is used to hold exhibitions and events from time to time.

☎ 0721-24-5500 📍 19-8 Honmachi, Tondabayashi City, Osaka 584-0093



Jinai-machi Community Hall
This is a great place to take a break from walking. The staff are happy to explain anything you need, including the local history and recommended tourist spots. There is also an exhibition on the local history and culture.

☎ 0721-26-0110 📍 9-29 Tondabayashi-cho, Tondabayashi City, Osaka 584-0033



Jinai-machi View Plaza
This plaza offers panoramic views of the surrounding mountains. Jinai-machi and the landscape look even better with a breeze on your back. Take time to relax at the rest house built by renovating a traditional townhouse.

📍 18-51 Tondabayashi-cho, Tondabayashi City, Osaka 584-0033

Cafés, bakeries, and unique stores –
the Jinai-machi area is home to many attractive shops. To see their locations, **visit the website.**

Missions

in Tondabayashi

Have a great time!



Mission → Enjoy playing in Tondabayashi!

MISSION 1

At Savor Farm

Try your hand at farming.

The vast 20-hectare farm is the perfect place to enjoy both beautiful nature and good food. You can eat your fill of freshly-picked vegetables and fruit at the barbecue house and restaurant at the farm. If you want to taste local foods from Tondabayashi, Savor Farm is the best place to visit.

For more information on Savor Farm, see pages 13-14.

TONDA-verse 3



Work up a sweat!



Fill your stomach at a barbecue!

MISSION 2

Rental bike from Tondabayashi Station and Kishi Station

Go on a bike tour!



Rental bike "Kawacchirin"

Tondabayashi Station
1-1876 Wakamatsu-cho-nishi,
Tondabayashi City, Osaka
584-0025

Kishi Station
3-5-8 Kishi-cho,
Tondabayashi City,
Osaka 584-0005



Oh, what a nice breeze!



Some hidden gems are not widely known to tourists but worth a visit, and these places are often easily accessible by bike but not by car or train. Explore the area freely by bike and make unexpected discoveries.

Rental fee: ¥210/day (visit)

Where to rent and return a bike:
Tondabayashi Station / Kishi Station

*Please return the bike to the place where you rented it.

Visitors to Tondabayashi are given "missions" to seek out fun and relaxation. Completing these missions will make your visit even more rewarding. Recommended activities include trying farming, enjoying bike riding, seeing a planetarium show, visiting temples and bathing in a hot spring. Which will you try first?

MISSION 3

In Nishikori Park

Enjoy picnicking and appreciate nature.



Refresh yourself amid nature!

Feel the fresh air and have fun picnicking in Nishikori Park. With unique playground equipment such as a huge slide, the park is also popular for family outings.



Nishikori Park

0721-24-1506
1560 Nishikori,
Tondabayashi City,
Osaka 584-0063

MISSION 4

Pick-your-own farm

Enjoy picking seasonal fruit!

You can enjoy being a farmer in Tondabayashi, which has many pick-your-own farms popular with families and couples. Nothing tastes better than fresh fruit you've just picked yourself!



Kirameki Factory

0721-24-5500
19-8 Honmachi, Tondabayashi
City, Osaka 584-0093



Ask Kirameki Factory for information on where you can pick seasonal fruit!



Missions

in Tondabayashi

Enjoy the beautiful nature!



Mission →

Relax in Tondabayashi!

MISSION 1

At Mejirofudo Gansho-ji Temple

Enjoy spectacular panoramic views of Tondabayashi.

Great views!



Located on the hillside, Mejirofudo Gansho-ji Temple offers stunning panoramic views of the Osaka Plain. Don't miss the temple's beautiful five-story pagoda that stands out even from a distance.

Mejirofudo Gansho-ji Temple

☎ 0721-35-5751
📍 953 Fushimido, Tondabayashi City, Osaka 584-0055



TONDA-verse 3

MISSION 2

At Ryusen-ji Temple

Soak up the sacred atmosphere.

This space brings a deep sense of calm.

Enjoy strolling in the garden.

Enter through the Nio Gate, an important cultural property, and you will find yourself in a sacred space. The garden adjacent to the main hall is designated as a scenic spot by the Japanese government. Take a deep breath in this tranquil space and truly relax.

Ryusen-ji Temple

☎ 0721-34-3134
📍 888 Ryusen, Tondabayashi City, Osaka 584-0053



MISSION 3

In the planetarium theater housed in Subaru Hall

Be captivated by the stunning beauty of the starry sky.



This renowned planetarium theater provides an immersive experience, with realistic starry skies and dynamic CG images projected on a huge 20-meter diameter domed screen. The star-filled night sky, which can no longer be seen in urban areas, is spell-binding.

Truly beautiful!



Subaru Hall

📍 2-8 Sakuragaoka-cho, Tondabayashi City, Osaka 584-0084

MISSION 4

Have a pleasant and relaxing time

With a natural hot spring bath and delicious food.

After bathing in the hotel's renowned open-air hot spring bath that commands panoramic views of the surrounding area, enjoy *kaiseki*, Japanese-style course dishes. With Wi-Fi in each guestroom, the hotel is also an ideal place for a workcation.

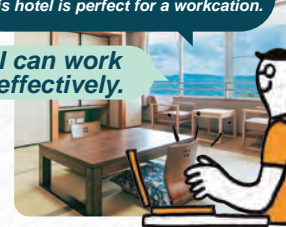
Kamenoi Hotel Tondabayashi

☎ 0721-33-0700
📍 880-1 Ryusen, Tondabayashi City, Osaka 584-0053

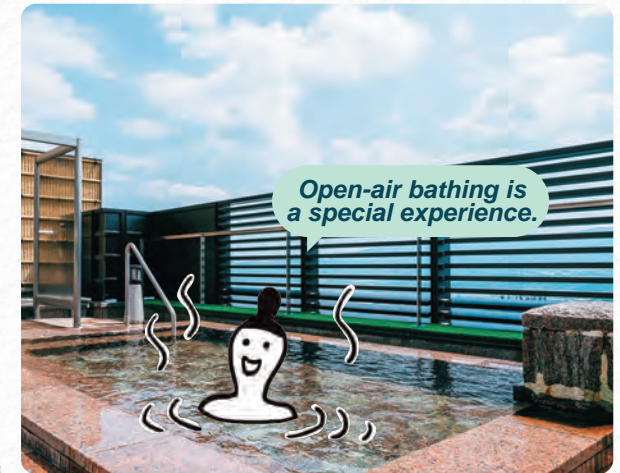


Complete with internet connection, this hotel is perfect for a workcation.

I can work effectively.



Open-air bathing is a special experience.



Spring



The farm is covered with colorful flowers in spring. The entire farm is tinted pink when the cherry blossoms are at their peak, entralling visitors with its breathtaking beauty. When the cherry blossom season is drawing to an end, colorful poppies and pansies begin to bloom; they may be less famous than cherry blossoms but are equally beautiful. The spectacular view of flowers will create a lasting memory.



▲ The spacious farm has many spots to enjoy cherry blossoms.



▲ The farm is an ideal place for enjoying a picnic amid the fresh greenery.

TONDABAYASHI 4

4 seasons in Savor Farm

Autumn



▲ Cosmos flowers shining in the autumn blue sky.

Cosmos flowers in full bloom with autumn leaves in the background create a picturesque view. Now's the time to take pictures in the field of pink and white flowers or walk across the fallen leaves and feel them crunch beneath your feet. A special autumn day awaits you.



Winter



In winter, field mustard flowers come into full bloom and cover the farm like a yellow carpet. Strawberry-picking is popular in winter. Enjoy a special winter's day eating freshly picked sweet strawberries with your friend.

Savor Farm

Here, you can get close to the beautiful nature of Tondabayashi all year round: try your hand at farming, such as planting and harvesting, or participate in a cooking class using fruit and vegetables fresh from the farm.

☎ 0721-35-3500

📍 2300 Kannabi, Tondabayashi City, Osaka 584-0054



Throughout the year, Savor Farm is carpeted with seasonal flowers over its vast area, offering different scenery in each season. Enjoy the sight, smell and sensation of flowers in full bloom, while relaxing in the beautiful natural environment of Tondabayashi.



▲ Families and couples love picking grapes when at their best in summer.



▲ Winter is the best season to enjoy large sweet strawberries.

Summer



In summer, Savor Farm is filled with greenery everywhere. The signature flower of summer is zinnia: their vivid colors stand out brightly against the high blue sky and fresh green leaves, shining in the sunlight.

Specialities from Tondabayashi are available here!

The shop at the entrance of the farm offers a wide array of top-quality agricultural products, including fresh vegetables and processed foods from Tondabayashi. Once you taste them, you'll be back for more.



Sweet-potato shochu distilled spirit



Savor Farm Wine



Grape juice



Strawberry jam



♡ ◻ ◻

Tabi Photo

Look into the viewfinder and take photos of the impressive scenery of Tondabayashi. Capture your own precious moments and cherish the memory.

Post photos with the hashtag #My favorite Tondabayashi!

とんだばやし とりっぶ@富田林観光情報 @osaka_tondabayashi_trip



Mejiro Fudo Gansho-ji Temple



Ishikawa Cycle Bridge

Nishikori Park



Riverbed of the Ishikawa



Mural Art [LIVING THE LIFE]

What to eat in Tondabayashi

recommendations by young citizens

If you don't know what to eat in Tondabayashi, why not try local dishes recommended by young citizens? Their suggestions, ranging from heavy meals to rare delicacies, will not let you down. Take your pick!

Recommendation

Kiryofu's Baked ramen noodles



FREE FREE FREE FREE FREE FREE FREE

Recommendation

The spicy soup seasoned with doubanjiang chili sauce and garlic goes perfectly with the special straight noodles. This ramen dish contains lots of ingredients, including Chinese cabbage, leeks, carrot and pork, so I eat it whenever I want to boost my energy.

☎ 0721-25-8585

📍 2-13-31, Koda, Tondabayashi City, Osaka 584-0036



Café Yu's Vegetable-and-egg sandwich



FREE FREE FREE FREE FREE

Recommendation

Made with fresh vegetables and savory egg salad, this sandwich is simple yet tasty. It is not only healthy but also filling.

☎ 0721-69-9978

📍 3-1-15, Teraikedai, Tondabayashi City, Osaka 584-0073



Sushi and robata restaurant Omasazushi's Tondabayashi Croquette



FREE FREE FREE FREE FREE FREE FREE

Recommendation

This croquette is packed with ebiimo taro, which is stickier than potato and is a specialty of Tondabayashi. Crispy outside and creamy inside, this croquette is best eaten hot from the fryer!

☎ 0721-24-9758

📍 10-34 Tokiwa-cho, Tondabayashi City, Osaka 584-0032



Yu-an's Oi, Mont Blanc



Recommendation

This is a soft-serve ice cream topped with baked sweet-potato paste and sticks. The paste feels smooth in the mouth and has a rich sweet-potato taste. Don't miss it if you love sweet-potato!

☎ 0721-55-3017

📍 2-7-5, Nanpudai, Tondabayashi City, Osaka 584-0051



※This shop is temporarily closed.

Recommendation

Sticky medium-fine straight noodles are served in a savory soup that perfectly balances a mixture of chicken broth and Japanese-style broth. Yuzu citrus peel enhances the flavor of the soup. You'll enjoy it to the last drop.

Shinyatai Taiga's Shinyatai-no-Ramen noodles



FREE FREE FREE FREE FREE FREE FREE

☎ 080-3833-2571

📍 2-1402-1, Wakamatsu-cho-nishi, Tondabayashi City, Osaka 584-0025



Galleria's Homemade sausage made of special Kagoshima pork



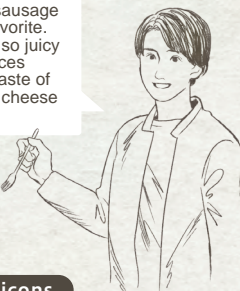
FREE FREE FREE FREE FREE FREE FREE

Recommendation

Galleria's homemade pork-and-herb sausage is my all-time favorite. The sausage is so juicy with its meat juices enhancing the taste of vegetables and cheese like a dressing.

☎ 0721-28-3828

📍 2-2-7, Koyodai, Tondabayashi City, Osaka 584-0082



ONIJUS COFFEE VILLAGE's Tsukimi BLT burger



FREE FREE

Recommendation

A large burger made with a patty grilled inhouse and a soft bun. I always enjoy the juicy taste of the quality meat and savor every single bite.

☎ 0721-23-8118

📍 5-10-8, Kishi-cho, Tondabayashi City, Osaka 584-0005



TONDAVERSE 6

Recommendation

With its perfect balance of chocolate, cream and cocoa sponge cake, this ganache cake tastes absolutely amazing. Whenever I take it home, my whole family wants a piece!

☎ 0120-15-4004

📍 19-15, Honmachi, Tondabayashi City, Osaka 584-0093

Patisserie yamao's Ganache



Machiya Kakyofugetsu's Chocolate terrine



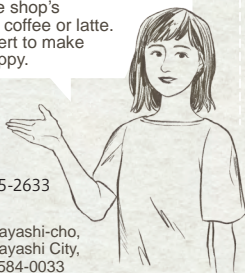
FREE FREE FREE FREE

Recommendation

The soft and smooth texture of the terrine perfectly matches the deep, rich chocolate taste. It tastes even better with the shop's special coffee or latte. A dessert to make you happy.

☎ 0721-55-2633

📍 11-11, Tondabayashi-cho, Tondabayashi City, Osaka 584-0033



Sushibiro's Shrimp bread

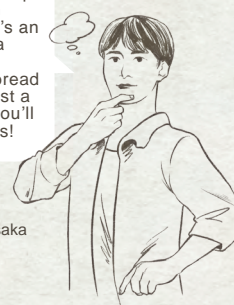


Recommendation

The tender, juicy shrimp goes really well with crispy fried bread. It's an interesting item for a sushi restaurant! Extra-large shrimp bread is also available. Post a photo on SNS and you'll surely get many likes!

☎ 0721-25-0021

📍 3-4-1, Kotobuki-cho, Tondabayashi City, Osaka 584-0031



Food allergen icons

Restaurants and shops with any of these icons offer menu items that do not contain the specified allergens.

*The dishes shown in the pictures are not necessarily free from allergens.

FREE Egg free FREE Milk free FREE Flour free FREE Shrimp free
FREE Crab free FREE Peanut free FREE Buckwheat free



TONDA-verse 7



Okashi-no-Yumekobo Itsuki



Icchan-baum

Baumkuchen made with 100% Japanese flour by a popular local cake shop. Enjoy the sweet butter cream sandwiched between layers as it melts in the mouth ♥



Gamaguchi kiss-lock case

Original cute hand-made kiss-lock cases are available in various patterns, including flowers and animals. Find your favorite unique item here.



19



We LOVE specialties of Tondabayashi.

The following highly-recommended products are made in Tondabayashi: they're delicious, cute, or convenient, and make the ideal gift for family and friends.

The best place to buy Tondabayashi's specialties



Kirameki Factory

0721-24-5500
19-8 Honmachi, Tondabayashi City, Osaka 584-0093



Teranishi Chicken Farm



Sashimi Egg

The farm is known for "Sashimi Egg," which is so fresh that "you can bite its white" as its motto goes. "Sashimi Egg" is very popular with local residents, who guarantee that once you try it, you'll never be satisfied with any other egg.



Sanyo

Sanyo premium cotton buds series

If you think all cotton buds are the same, try Sanyo's cotton buds. You'll love its special, comfortable feel. There are also unique cotton buds which come with a fortune written in Osaka dialect!



Kashiwaya Katsuragi-do



Jinai-machi Senbei crackers

These sets of senbei crackers are offered by a Japanese-style confectionery store established in Tondabayashi in the Edo Period. Each cracker is stamped with an image of a different building in Jinai-machi, making them too lovely to eat.



Fujiyaseika Honpo

Rakumameya

These bean snacks have a crunchy texture that keeps you coming back for more. They are also popular for their lovely round shape. In addition to the regular products, seasonal specials are also recommended ✨



Three main special agricultural products of Tondabayashi



Osaka eggplant



Osaka cucumber



Ebiimo taro



Shokuhin Kobo

Canned yamatoni simmered beef

Thick beef slices are cooked in a traditional yamatoni style. Their sweet-and-spicy flavor fills the mouth and tastes great. You won't need anything else for supper!



Futakuchi Sangyo

Choraku FIT STYLE belt

This may seem an ordinary belt, but it is actually a rubber belt that fits the waist of the wearer without having to adjust the length. This may make a good gift for your father 📺



Please direct part of your residential taxes to Tondabayashi City in the Furusato Nozei hometown tax donation program.

Tondabayashi City offers local specialties and various other attractive products in return for your hometown tax donations. These donations are used for the city's community building and parenting support programs.

*If you make donations under this program, you can get a reduction in income and residential taxes by filing a tax return or using the One-Stop system.

*Note that by law, citizens of Tondabayashi City are not permitted to receive a return gift for their tax payments to Tondabayashi City.

Tondabayashi City portal sites to make hometown tax donations



Satofull



Furusato Choice



Rakuten Furusato Nozei



Furunavi

About TONDABAYASHI

Learn more about Tondabayashi City!

Emblem of Tondabayashi City

This emblem combines three of the Japanese katakana character "ト (To)," the first syllable of "Tondabayashi." Three "To's" can be read as "tomi" ("mi" means "three" in Japanese), which is the first kanji character of "Tondabayashi," meaning "wealth." Both ends of each of these characters are shaped like an arrow, representing the city expanding its presence far and wide in all directions.



Location

Located in the southeastern part of Osaka Prefecture, Tondabayashi City boasts a rich natural and historical heritage. The city has prospered since ancient times, as shown by the historical townscape preserved in Jinai-machi.



Access

To Tondabayashi by rail	
Osaka-Abenobashi Station	Kintetsu Minami-Osaka Line/ Nagano Line Approx. 30 min.
Kawachi-Nagano Station	Kimetsu Nagano Line Approx. 10 min.

Tondabayashi Station

To Tondabayashi by car	
Hanshin Expressway:	Exit at Miyake I.C. and drive approx. 20 min. on National Route 309.
Nishi-Meihan Expressway:	Exit at Fujiwara I.C. and drive approx. 20 min. on Osaka Outer Loop Route (National Route 170).
Minami-Hanna Road:	Exit at Habikino I.C. and drive approx. 10 min. on Osaka Outer Loop Route (National Route 170).



Taking action as an SDGs Future City

SDGs Future Cities are municipalities selected by the Cabinet Office in recognition of their efforts toward achieving the SDGs. Tondabayashi City was designated as an SDGs Future City 2020, and has since been promoting various SDG-related initiatives.



Bus routes are convenient for visiting Tondabayashi City. Access the bus route map of Tondabayashi City.



Published by Commerce, Industry and Tourism Department, Tondabayashi Municipal Government

Published: February 2023

TEL: (0721)25-1000

Production: WAVE LTD. Supported by: Faculty of International Tourism of Hamman University, "kokoton" Tondabayashi Youth Council

Welcome to
TONDA-verse



TONDABAYASHI
Tourist Guide